

Accommodation List

Rama 9 Campus

Accommodation Type

- **Apartment**
- **Condominium**
- **Rented Townhome**

Apartment

Things you should know

1. The first payment must be done on your arrival day. Students have to prepare money in Thai Baht to pay for the payment.
2. The first payment includes the deposit (2 months), 1 month advance and key card or finger scan (200 baht per card or scan)

For example: If the room is 4,800 baht per month, the first payment will be

The deposit (2 months)	$4,800 \times 2 = 9,600$	Baht
1 month advance	= 4,800	Baht
Key card or Finger scan	= 200	Baht
Total	= 14,600	Baht

- * The 1 month advance will be used for the last month of the contract. If you are not going to extend the contract, inform the apartment for at least 1 month in advance, you will get the deposit back.
3. The rental invoice, which includes water and electricity, will be sent to you at the end of the month. Please pay the room rent no later than the 5th of the next month. Late payment will be charged depending on each apartment's rules.
 4. Standard rooms here are studio without kitchen or cooking facility. Every room has a bathroom inside and a balcony.
 5. The apartment prices can not be discounted. Please do not bargain.
 6. We do not provide a reservation service for condominiums. If you want to rent a condo's room, you have to contact their office or the landlord (s) by yourself. If you are under 20 years old, you need to have your parent or relatives whose age is above 20 to do the contract instead.

MT Residence

+662-736-3000

11 Ramkhamhaeng 42 Hua Mark, Bangapi, Bangkok 10240

MT Residence Monthly Rental



Size 27 sq.m. 4,400 baht (without TV + refrigerator + microwave)
*** Exclude electrical / water ***

Size 27 sq.m. 5,000 baht (Include TV + refrigerator)
Size 37 sq.m. 5,200 baht (Include TV + refrigerator + microwave)
Size 39 sq.m. 5,400 baht (Include TV + refrigerator + microwave)
*** Exclude electrical / water ***



service room size 37 sq.m. and 39 sq.m.

- price 7,000 baht (with TV + Refrigerator + microwave + beddings + weekly cleaning 1 time + free wifi 1 month) *** Exclude electrical / water ****

size 54 sq.m. 1 bedroom 1 living room & kitchen

- price 9,500 baht (with TV + Refrigerator + Electric stove)

service room size 54 sq.m.

- price 13,500 baht (with all bed sheet and weekly cleaning 1 time) *** Exclude electrical / water ***



size 82 sq.m. 2 bedroom 1 living room & kitchen

- price 13,500 baht (with TV + Refrigerator + Electric stove)

service room size 82 sq.m.

- price 20,000 baht (with all bed sheet and weekly cleaning 1 time) *** Exclude electrical / water ***

* **Monthly** - minimum 3 months for contract + 3 months deposit

* **Service room** - minimum 1 month for contract + 2 months deposit (electricity 6 baht per unit / water 100 baht for 1 person)

Provided furniture:

- Bed, Wardrobe, Bedding Table, Water Heater, Air conditioner, Bedding set

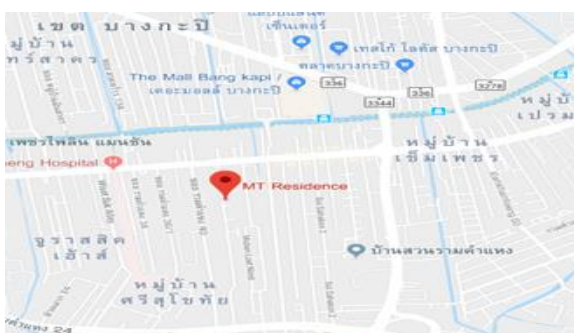
First payment & Length Contract:

- Deposit (2 months) + 1 month advance + Key card 300 THB. per set
onhs, 6 months, 1 year

Facilities:

- Swimming pool (free)
- Gym (30 THB. per time)
- Coin-operated laundry
- Security Guard (24 hours) & CCTV
- Key card system
- Internet Wifi (350 THB. for 30 days)

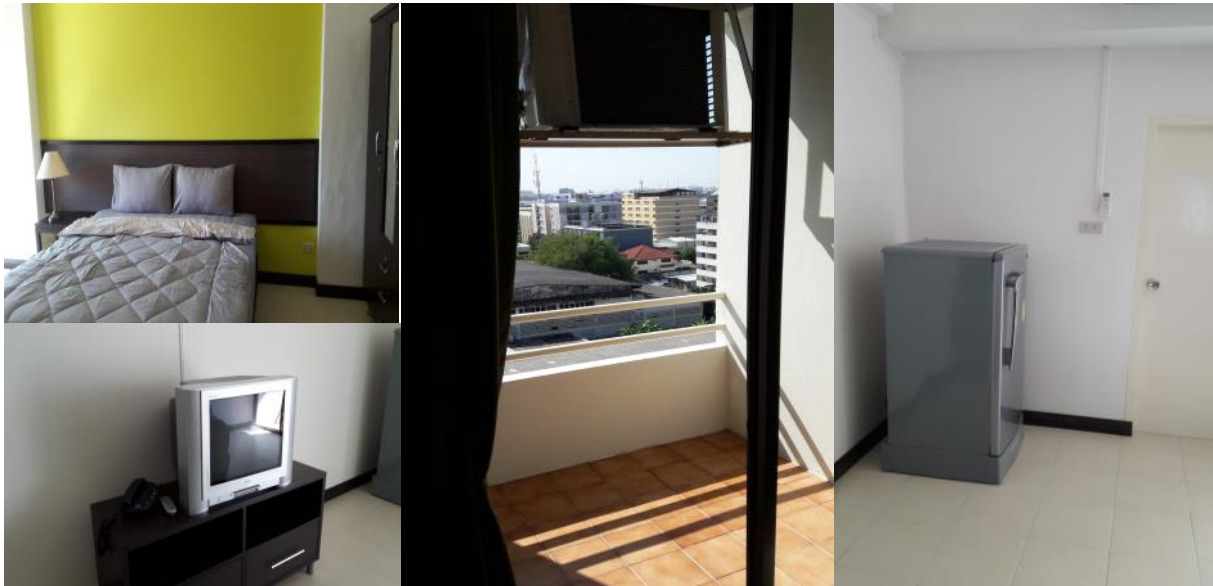
Service: Including cleaning room and changing bed sheet every week



The Park Ramkhamhaeng (Baan Suan)

2328/2120 Ramkhamhaeng 52/2 Hua Mark, Bangapi, Bangkok 10240

+6685-903-7867



Room type	Room Size	Price (USD)	Price (THB)
Studio	30 sq.m. (Front/ Back)	145/148	4,800/ 4,900
Studio	34 sq.m. (Corner)	170	5,600
Studio	38 sq.m.	197	6,500

First payment & Length Contract:

- Deposit (2 months) + 1 month advance + Finger scan 200 THB. per person
- 3 months, 6 months, 1 year
- Potector pat 750 THB.

Electricity: 7 THB. per unit, at least 90 THB.

Water: At least 126 THB. per month
Surplus 18 THB. per unit

Provided furniture:

- Bed, Bedding set, Wardrobe, Bedding Table, Water Heater, Air Conditioner, Television, Refrigerator

Facilities:

- Swimming pool, gym (next to the apartment, 6 times per month)
- Coin-operated laundry
- Security Guard (24 hours) & CCTV
- Finger scan 200 THB.
- Internet Wifi 512kbps (free)
- Cable TV



AHome Residence

+662-319-6100
+6684-678-6101

1/1 Soi 16 Seree 2
Huamark, Bangkok
Bangkok 10250

Thank you for your inquiry! Below please find the rate for different room types at @HOME

*** SPECIAL RATE FOR STUDENTS ONLY ***

@HOME			
Room Type(s)/Duration	1 month	2-3 months	4 months & above
Studio (28 sq.m.) No view	10,000 baht	8,500 baht	6,500 baht
Studio (28 sq.m.)	11,000 baht	9,000 baht	7,000 baht
Deluxe (35 sq.m.) A & B	14,000 baht	12,500 baht	10,500 baht
Junior Suite (50 sq.m.)	18,000 baht	16,000 baht	14,000 baht

* Rate above is the rate per month. Utilities are excluded (Electricity: 6 baht/unit & Water: 15 baht/unit <minimum 105 baht>)

*The maintenance fees of 300 baht per month. *The maintenance fees are the use of electricity & cleaning in the common areas, elevator, security, garbage collection, cable TV, admin fee, etc.*

* Two months security deposit & 1 month rental when signing a contract

Facilities	Studio	Deluxe	Junior Suite
TV	✓	✓	✓
Cable TV	✓	✓	✓
Refrigerator	✓	✓	✓
Water Heater	✓	✓	✓
Bed + Mattress (5ft)	✓	✓	✓
Air-conditioner	✓	✓	✓
Private Bathroom	✓	✓	✓
Furniture (Table, Chair, Shelf)	✓	✓	✓
Sofa	✓	✓	✓
Balcony	✓	✓	✓
Closet	✓	✓	✓
Walk-In Closet			✓
Telephone Line	✓	✓	✓
Sink (Dish Washer)		✓	✓
Pantry Area		✓	✓
Microwave		✓	✓

We provide 24 hrs securities, CCTV, Magnetic Card/Finger Scan. Our community features include Covered Parking, Elevator, Front Desk, Washing & Dryer Machines, Drinking Water Machine, and Free Wi-Fi Internet, and get access to the swimming pool at Bangkok Inter Place Hotel.

We also provide a new service for an international students who stays short term (2-3 months). Renting as a serviced apartment, you can just bring you luggage and do not have to worry about other things while staying with us.

RATES FOR SERVICED APARMENT

Packages	@HOME (SERVICED APARMENT)		
	Gold	Silver	Bronze
Bedsheet	✓	✓	✓
Pillows (2)	✓	✓	✓
Blanket	✓	✓	✓
Towels (2)	✓	✓	✓
Cleaning Room	Every other day	2 times per week	1 time per week
Bottle of water (2)	✓	✓	✓
Internet	✓	✓	✓
Utilities *	included	included	excluded
Rate	21,000 baht	18,000 baht	10,000 baht

Utilities Rates: Electricity 6 baht/unit, water 15 baht/unit (minimum charge 105 baht)



How to commute to Stamford University from @HOME



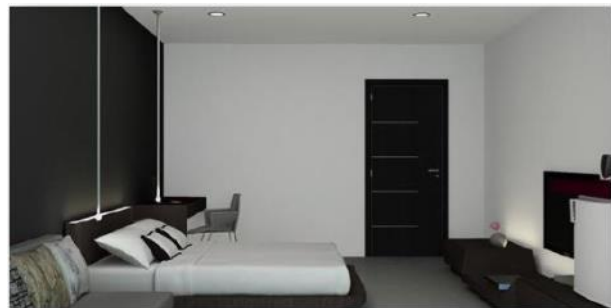
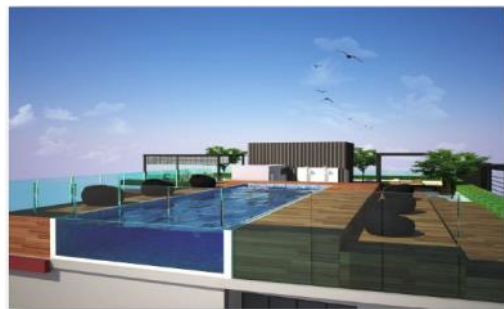
1. Walk or Take a motorbike provided by @HOME to The Nine Shopping Center. (Complimentary)
2. Take the vans from The Nine Shopping Center to the Airport Rail Link Hua Mark Station. The vans run every 30 minutes starting from 12:04PM to 8:00PM (Complimentary)
3. The Stamford will provide a shuttle van service to the University from the Airport Rail Link Hua Mark Station (Complimentary) Please check out the van schedule below (5 NOV-22 DEC 2018/ 2 JAN- 2 FEB 2019)



De Botan

12 Soi Supapong 3 Section 2, Nong Bon,
Pravet District Bangkok 10250, Thailand

+6685-352-1888



Room type	Room Size	Price (USD)	Price (THB)
Studio (King bed)	28 sq.m.	209	6,900
Studio (Twin bed)	31 sq.m.	239	7,900
Studio (King bed)	41 sq.m.	270	8,900

First payment & Length Contract:

- Deposit (2 months) + 1 month advance
- 6 months, 1 year

Electricity: 8 THB per unit

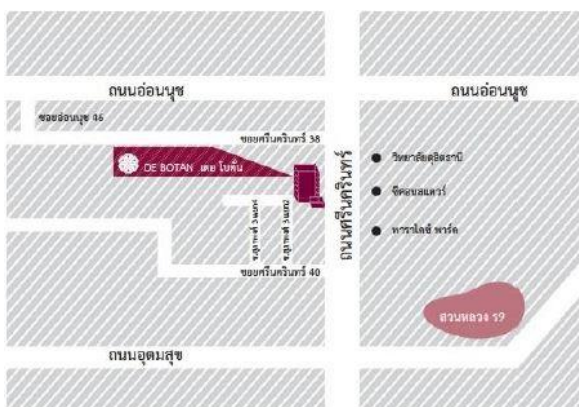
Water: 18 THB per unit at least 108 Baht

Provided furniture:

- Bed
- TV stand
- Washing sink
- A/C
- Cable TV
- Excluding bed sheet and pillow
- Beside table
- Working desk
- Wardrobe
- Hot water
- Room size 31 sqm.

Facilities:

- Security Guard (24 hours) & CCTV & Keycard system
- Laundry
- Fitness, pool
- Restaurant & Coffee corner

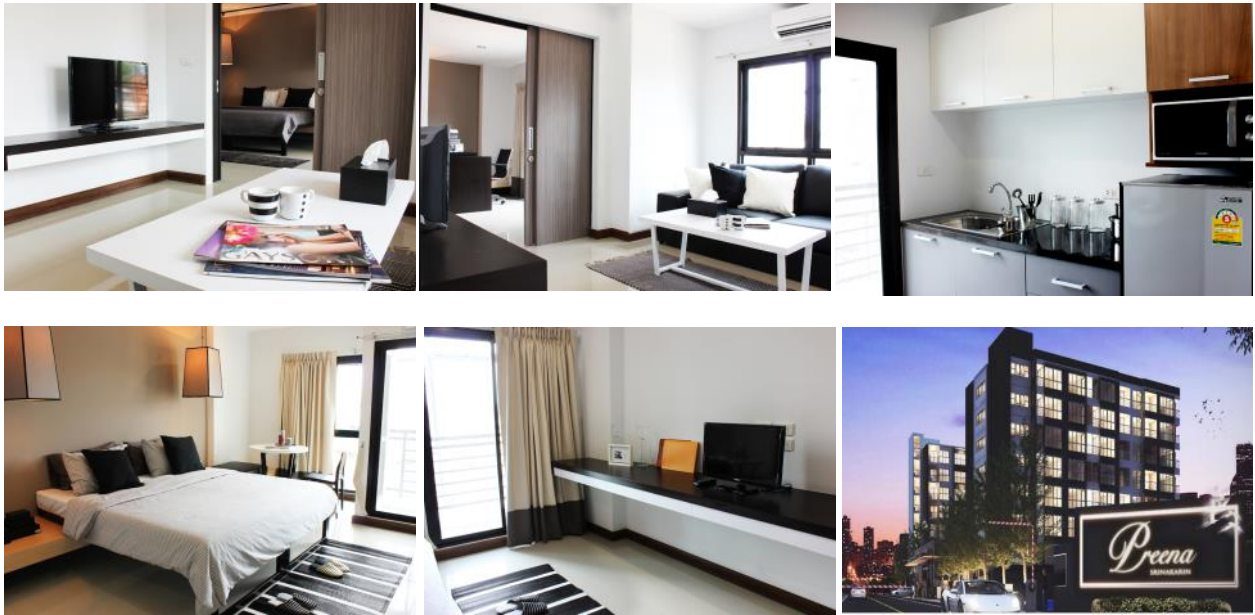


Preena Srinakarin

9 Soi Srinakarin 49 Srinakarin Rd.

Nongbon Prawet Bangkok 10250

+662-321-3315



Room type	Room size	Price (USD)	Price (THB)
Type A	62 Sq.m.	800	24,000
Type B	27 Sq.m.	450	13,500
Type F	30 Sq.m.	517	15,500

First payment & Length Contract:

- Deposit (2 months) + 1 month advance
- 6 months, 1 year

Electricity: 8 THB per unit

Water: At least 6 unit per month
18 THB per unit

Provided furniture:

- Bed
- TV
- Washing sink
- Microwave
- Cable TV
- Excluding bed sheet and pillow
- Refrigerator
- Dining set 4(A) 2(B)
- Wardrobe
- Hot water
- Sofa (A)

Facilities:

- Security Guard (24 hours) & CCTV
- Finger scan system
- Parking lot
- Mini mart , Laundry shop



My Home

18/1 Soi Supapong 1 Section 3-3, Nong Bon,
Pravet District Bangkok 10250,

+662-748-0722



Room type	Room size	Price (USD)	Price (THB)
View	28 sq.m.	182	6,000
Standard	28 sq.m.	182	6,000
Studio	38 sq.m.	227	7,500
Corner	42 sq.m.	227	7,500

First payment & Length Contract:

- Deposit 10,000 THB + 1 month advance
- 1 year contact

Electricity: 7 THB per unit

Water: 18 THB per unit

Provided furniture:

- Bed
- TV stand
- Washing sink
- A/C
- Cable TV
- Beside table
- Working desk
- Wardrobe
- Hot water
- Excluding bed sheet and pillow

Facilities:

- Security Guard (24 hours) & CCTV & Keycard system
- Laundry
- Fitness
- Parking lot
- Internet Wifi (Free)
- minimart
- restaurant



My House

18/1 Soi Supapong 1 Section 3-3, Nong
Bon, Pravet District Bangkok 10250,

+662-748-0722



Room type	Room size	Price (USD)	Price (THB)
Standard/View	25 sq.m.	167	5,500
Studio	32 sq.m.	212	7,000
Corner	38 sq.m.	227	7,500
Suite	45 sq.m.	258	8,500

First payment & Length Contract:

- Deposit 10,000 THB + 1 month advance
- 1 year contact

Electricity: 7 THB per unit

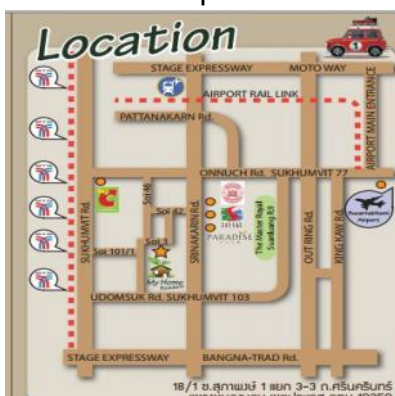
Water: 18 THB per unit

Provided furniture:

- Bed
- TV stand
- Washing sink
- A/C
- Cable TV
- Beside table
- Working desk
- Wardrobe
- Hot water
- Excluding bed sheet and pillow

Facilities:

- Security Guard (24 hours) & CCTV & Keycard system
- Laundry
- Fitness
- Parking lot
- Internet Wifi (Free)
- Minimart
- Restaurant



My Garden

18/1 Soi Supapong 1 Section 3-3, Nong
Bon, Pravet District Bangkok 10250,

+662-748-0722



Room type	Room size	Price (USD)	Price (THB)
Standard	26 sq.m.	182	6,000
View	29 sq.m.	182	6,000
Corner	42 sq.m.	258	8,500
Suite	45 sq.m.	258	8,500

First payment & Length Contract:

- Deposit 10,000 THB + 1 month advance
- 1 year contact

Electricity: 7 THB per unit

Water: 18 THB per unit

Provided furniture:

- Bed
- TV stand
- Washing sink
- A/C
- Cable TV
- Beside table
- Working desk
- Wardrobe
- Hot water
- Excluding bed sheet and pillow

Facilities:

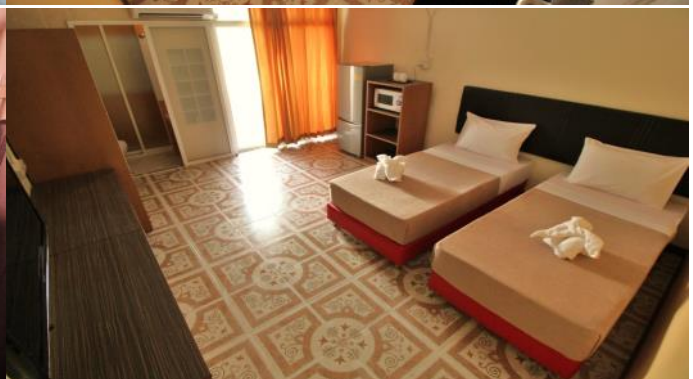
- Security Guard (24 hours) & CCTV & Keycard system
- Laundry
- Fitness
- Parking lot
- Internet Wifi (Free)
- Minimart
- Restaurant



AC Habitat

2 Soi Ramkhamhaeng 42 , Hua Mark,
Bangkapi Bangkok 10240,

+6684-900-0772



Room type	Room size	Price (USD)	Price (THB)
Twin bed	26-27 sq.m.	182-212	7,500
King size	26-27 sq.m.	182-212	7,500

First payment & Length Contract:

- Deposit 10,000 THB. + 1 month advance
- half year contact

Electricity: 8 THB. per unit

Water: 20 THB. per unit

Provided furniture:

- Fully furnish
- Large Balcony
- Washing sink
- A/C
- Refrigerator
- Microwave
- LED TV
- Hot water

Facilities:

- Security Guard & CCTV & Fingerprint system
- Cable TV (free)
- Fitness (free)
- Parking lot
- Drinking Water (free)
- Meeting room
- Internet Wifi (free)



AC Sport Village

61/1 Soi Ramkhamhaeng 50 , Hua Mark,
Bangkapi Bangkok 10240,

+6684-900-0772



Room type	Room size	Price (USD)	Price (THB)
King size	29 sq.m.	242	8,000

First payment & Length Contract:

- Deposit 10,000 THB. + 1 month advance
- half year contact

Electricity: 8 THB. per unit

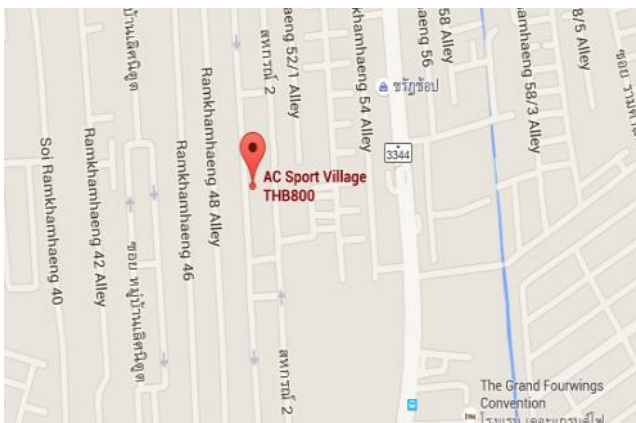
Water: 20 THB. per unit

Provided furniture:

- Fully furnish
- Large Balcony
- Washing sink
- A/C
- Refrigerator
- Microwave
- LED TV
- Hot water

Facilities:

- Security Guard & CCTV & Fingerprint system
- Cable TV (free)
- Fitness (free)
- Parking lot (free)
- Swimming pool (free)
- Internet Wifi (free)



P Park Residence

597 Srinakarin Rd.

Suan Luang, Bangkok

+662-320-1488



Room type	Room Size	Price (USD)	Price (THB)
Superior	30 sq.m.	197-212	6,500-7,000

First payment & Length Contract:

- Deposit (2 months) + 1 month advance
- Key card 350 THB
- 6 months, 1 year contact

Electricity: 8 THB per unit

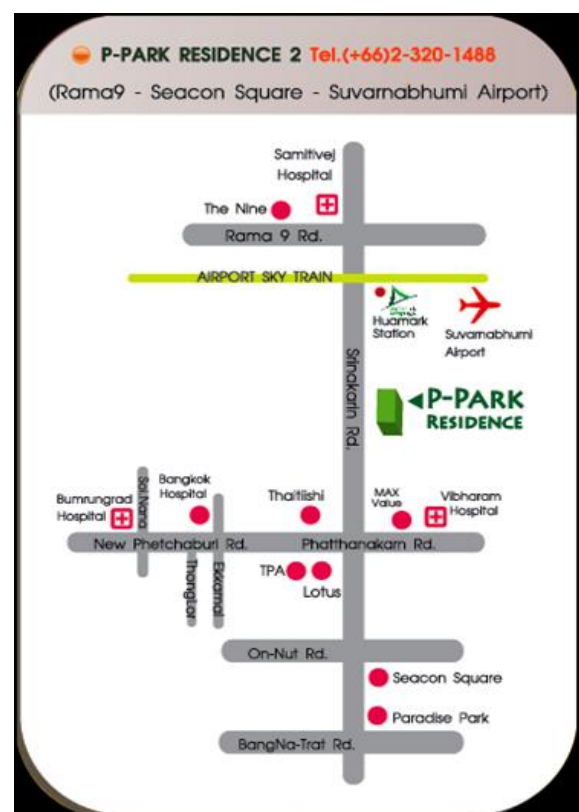
Water: 20 THB per unit

Provided furniture:

- Bed, Wardrobe, Dressing Table, Water Heater, Air Conditioner, Television, Refrigerator
- Excluding dress sheet and pillow

Facilities:

- Swimming pool & Gym (Free for Stamford students tenant)
- Coin-operated laundry
- Security Guard (24 hours) & CCTV



ROOM24@Hua-Mark

597 Srinakarin Rd.
Suan Luang, Bangkok 10250

+6681-456-0416



First payment & Length Contract:

- Deposit (2 months) + 1 month advance
- Key card 350 THB
- 6 months contact,1 year contact

Electricity: 8 THB per unit

Water: 20 THB per unit

Provided furniture:

- Bed, Wardrobe,
Dressing Table,
Air Conditioner, Television, Refrigerator
- Excluding bed sheet and pillow (Picture for advertising only)

Facilities:

- Free Swimming pool & Gym (1 year contact),Close to Air port railing
& Free shuttle van to STIU.
- Coin-operated laundry & Water
- Security Guard & CCTV, Free Wifi Internet (300 THB for opening)

Room type	Room Size	Price (USD)	Price (THB)
Studio	20 Sq.m.	115-136	3,800-4,500

ROOM24@Phathanakan

27/1, Phathanakan 54

Suan Luang, Bangkok 10250

+6681-456-0416



First payment & Length Contract:

- Deposit (2 months) + 1 month advance
- Key card 350 THB
- 6 months contact & 1 year contact

Electricity: 8 THB per unit

Water: 20 THB per unit

Provided furniture:

- Bed, Wardrobe, Dressing Table, Air Conditioner, Television, Refrigerator
- Excluding bed sheet and pillow (Picture for advertising only)

Facilities:

- Free Swimming pool & Gym (1 year contact),Close to Tesco Lotus
- Coin-operated laundry & Water
- Security Guard & CCTV, Free Wifi Internet (300 THB for opening)

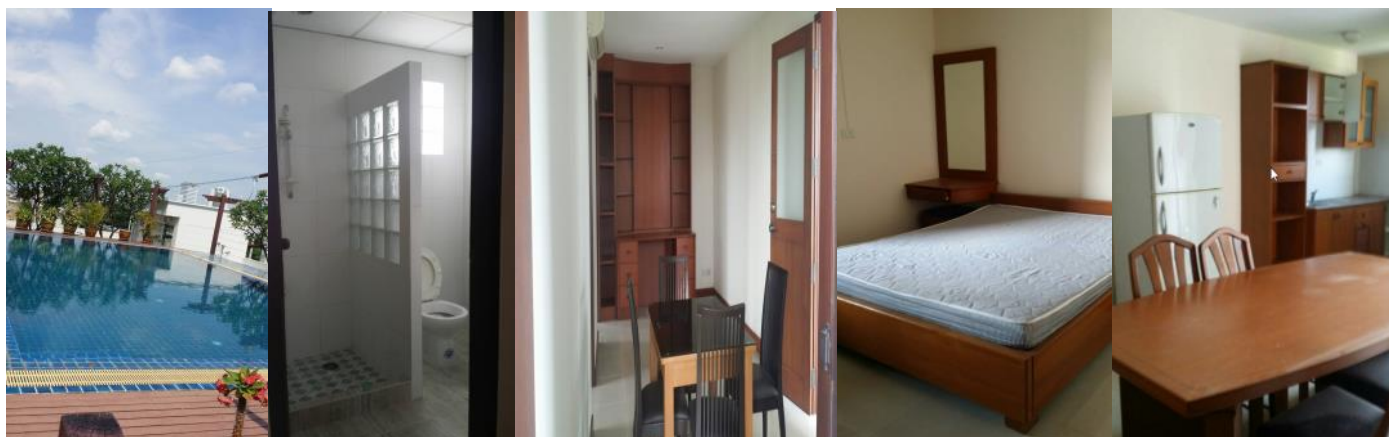
Room type	Room Size	Price (USD)	Price (THB)
Studio	12 Sq.m.	111	4,000

Sookkasem Place

+6681-646-7192

10 HuaMark Rd. Soi Hua Mark 12

Bangkapi, Bangkok 10240



Room type	Room size	Price (USD)	Price (THB)
Studio	27 sq.m.	152	5,000
Studio	38 sq.m.	197	6,500
Studio	43 sq.m.	227	7,500
Double room	54 sq.m.	303	10,000
Triple room	80 sq.m.	424	14,000
Triple room	100 sq.m.	485	16,000

Provided furniture:

- Bed, Wardrobe,
Dressing Table,
Air Conditioner
- Excluding bed sheet and pillow

Facilities:

- Free Swimming pool
- Internet Wifi 20 mb 200 BTH/month

First payment & Length Contract:

- Deposit (2 months) + 1 month advance
- 6 months contract
- Free key card

Electricity: 7 THB per unit

Water: 18 THB per unit

Tres Casa Apartment

+6681-820-1939

3, Soi Ramkhamhaeng 46.

Hua Mark, Bangkapi, Bangkok 10240



Room type	Room size	Price (USD)	Price (THB)
Standard	32 sq.m.	236	8,500
Standard (corner)	38 sq.m.	264	9,500

Provided furniture:

- Bed, Wardrobe, Dressing Table, Air Conditioner, TV, Refrigerator and Microwave
- Excluding bed sheet and pillow

Facilities:

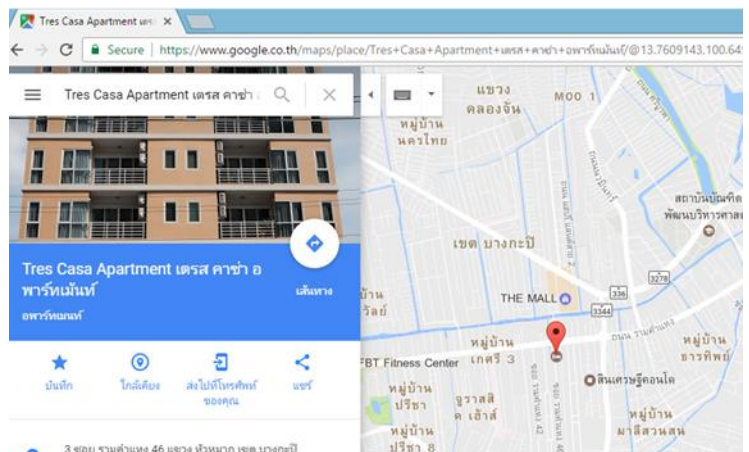
- Internet Wifi 50 mb free, Laundry area, Drinking water

Electricity: 8 THB per unit

Water: 18 THB per unit

First payment & Length Contract:

- Deposit (2 months) + 1 month advance
- 3 months contract
- Free finger scan



Sasanaphan Mansion

+6681-357-6170

52/2, Motorway Road (Right Side, Km.2+500)

Prawet Bangkok 10250 (nearby campus)



Room type	Room size	Price (USD)	Price (THB)
Standard	28.8 sq.m.	152	5,500
Standard (corner)	28.8 sq.m.	166	6,000

Provided furniture:

- Bed, Wardrobe, Dressing Table, Air Conditioner, Refrigerator
- Excluding bed sheet and pillow

Facilities:

- Free Wifi, Laundry machine, Drinking water Machine, Free Bicycle service

Electricity: 8 THB per unit

Water: 18 THB per unit

First payment & Length Contract:

- Deposit (2 months)
- 6 months contract
- Key Card system

Friendly Home

+6695-176-6215

42/1, Motorway Road (Right Side,Km.2+600)

Prawet, Bangkok 10250 (nearest campus)



Room type	Room size	Price (USD)	Price (THB)
Empty room	14 sq.m.	113	3,500

Provided furniture:

- Air Conditioner

Facilities:

- Free Wifi, Laundry machine, Drinking water Machine
- Car park 300 Baht/Month

First payment & Length Contract:

- Deposit 3,000 Baht
- Advance payment 1 month
- 6 months contract
- Key Card system

Electricity: 8 THB per unit

Water: 18 THB per unit

Nuthkitinee Place

52, Soi Ramkhamhaeng 52

Hua Mark, Bangapi, Bangkok 10240

+6693-275-5563

(nearby Baan Suan)



Room type	Room Size	Price (USD)	Price (THB)
Air condition	20 s.q.m	140	4,200
Air condition+T.V.	20 s.q.m	150	4,500
Air condition+T.V.+Refrigerator	20 s.q.m	160	4,800

Provided furniture:

- Bed, Wardrobe, Dressing Table, Air Conditioner, Refrigerator, Elevator
- Excluding bed sheet and pillow

Facilities:

- Wifi 300 Baht/Month, Laundry machine

First payment & Length Contract:

- 3 months contract
- Finger Scan system

Electricity: 5 THB per unit

Water: 15 THB per unit

Kornkanok Place

+6681-403-3925

4 Soi Srinakarindra 2 Srinakarindra Rd,
HuaMark, Bangkapi, Bangkok 10240



Room type	Price (USD)	Price (THB)
Fan	97	2,900
Air condition	110-117	3,300-3,500

First payment & Length Contract:

- 1 year contract

Electricity: 8 THB per unit

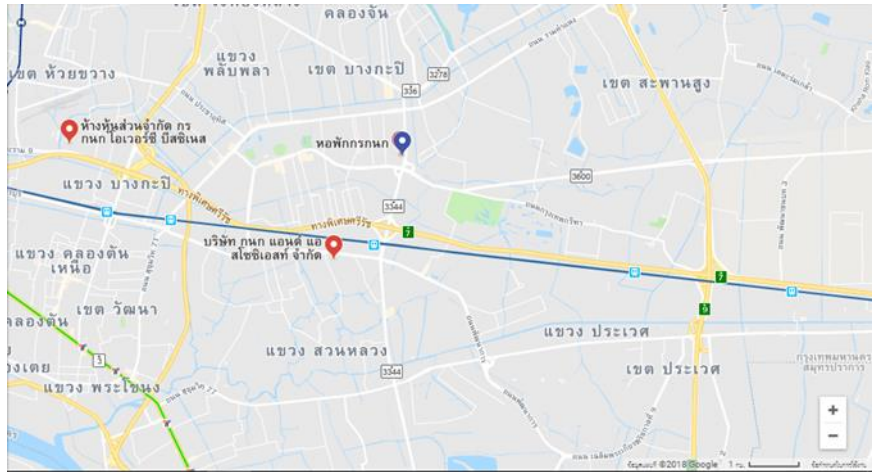
Water: 18 THB per unit

Provided furniture:

- Bed
- Dressing Table,
- Air Conditioner, Fan
- Excluding bed sheet and pillow

Facilities:

- Wifi, Laundry machine



Sky Place Srinakarin +6697-252-2061

522 Srinakarindra 8 RD. Srinakarindra Rd,
Suanluang, Bangkok 10250



Room tariff

Category	Space (sqm)	Monthly (without service)	Monthly (with service)	Daily	
Studio	Regular	34	8,800	11,800	
	Deluxe		10,800	13,800	1,200
Moon Corner			14,800	17,800	2,000
Sky Corner	45-55		15,800	18,800	2,200
Junior Suite	64		19,800	25,800	3,200
Executive Suite I	105		22,900	28,900	3,000
Executive Suite II	140		25,900	31,900	4,800

Service : provided bed sheet, linen, towels and cleaning twice a week
 Without cleaning service : No bed sheet, linen and towels

1 month advance and 1 month deposit payment
Key card deposit 500 THB/set

**Electricity : 3.71 THB/unit **Water pumping : 3.12 THB/unit
 **Water supply : 15.38 THB/unit **Water recycling service : 100 THB/month

- Free Wi-Fi
- 24 hours security system
- Restaurant and room service
- Swimming pool, Fitness and sauna
- Bathroom with water heater
- No pet allowed

Fully furnished, air conditioner, television and refrigerator. Standard fire protective system, laundry and coin-laundry area.

Website: www.skyplace.com Email: skyplace@skyplace.com
 522 Srinakarindra Road, Suanluang (Bangkok) 10250
 Tel: +66 2701 7739 To 47 Fax: +66 2701 7748



Skyplace Srinakarin is located on Rama 9 and Srinakarindra road junction, nearby Samitivej Srinakarindra hospital, Airport Rail Link (Huamak station), MaxValu supermarket, The nine center.

From the Rama 9 road turn left to the curve into Srinakarindra Road Soi 8 on the left side and go straight, Skyplace is on the right at the end of the road.

Take 15-20 minutes to Suvarnabhumi airport on motorway. And 20 minutes to the city center by expressway.

Condominium

Condominiums

A condominium, or condo, is the form of housing tenure and other real property where each room is individually owned

Normally the contract is 1 year

You have to be over 20 years old to do the contract

Each room is different as it is owned by different landlord

Room Type	Room Size	Price (USD)	Price (THB)
Studio	30-38 sq.m.	284 - 417	8,500 - 12,500
1 bedroom	45-49 sq.m.	417 - 534	12,500 - 16,000
2 bedrooms	56-60 sq.m.	617 - 1,000	18,500 - 30,000

If you want to rent a condo...

You have to stay in a hotel (or you can stay in one of our housing for daily rent) for 2-3 days to see the rooms and do the paperwork

You have to be over 20 but if you are under 20, your parents or relatives whose age is above 20 has to do the contract instead

Please be noted that our services do not include finding a condo for you

Rich Park@Triple Station

+6697-298-9594

570 Srinakarin soi 17 Srinakarin Rd.

Suan Luang Suan Luang, Bangkok 10250



Condominiums

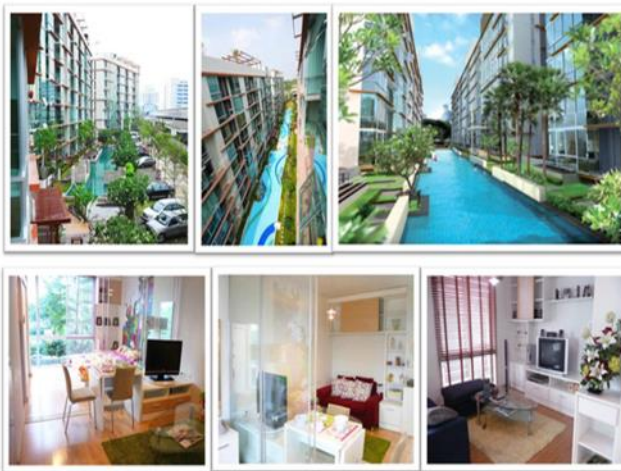
Lumpini Ville Ramkhamhaeng 44



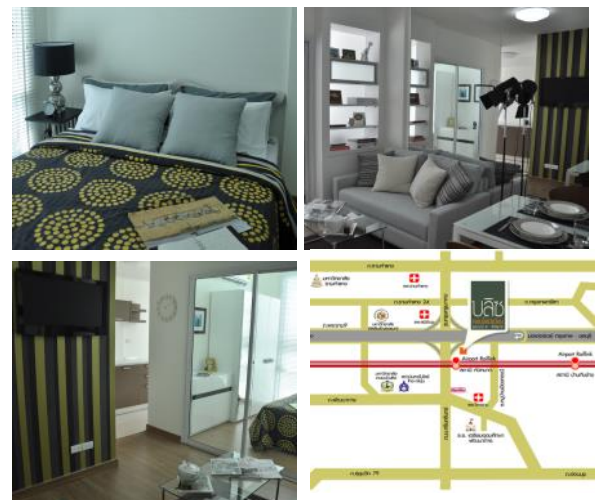
Lumpini Ville Ramkhamhaeng 26



The Iris, Rama 9 Srinakarin



Bliz Condominium Rama 9—Huamark



U Delight @Huamark



Lumpini Place Huamark station



Rented Townhome

Rented Townhome

A rented townhome that we would like to suggest is “The Metro Pattanakarn-Srinakarin” right next to Stamford Bangkok campus. It composed of 3 bedrooms, 4 toilets, 1 living room, and 1 kitchen with minimal of 1 year contract.

You have to be over 20 years old to do the contract



Each townhome is different as it is owned by different landlord.
Average price: 24,000—35,000 THB

If you want to rent a condo...

You have to stay in a hotel (or you can stay in one of our housing for daily rent) for 2-3 days to see the rooms and do the paperwork

You have to be over 20 but if you are under 20, your parents or relatives whose age is above 20 has to do the contract instead

Please be noted that our services do not include finding a condo for you