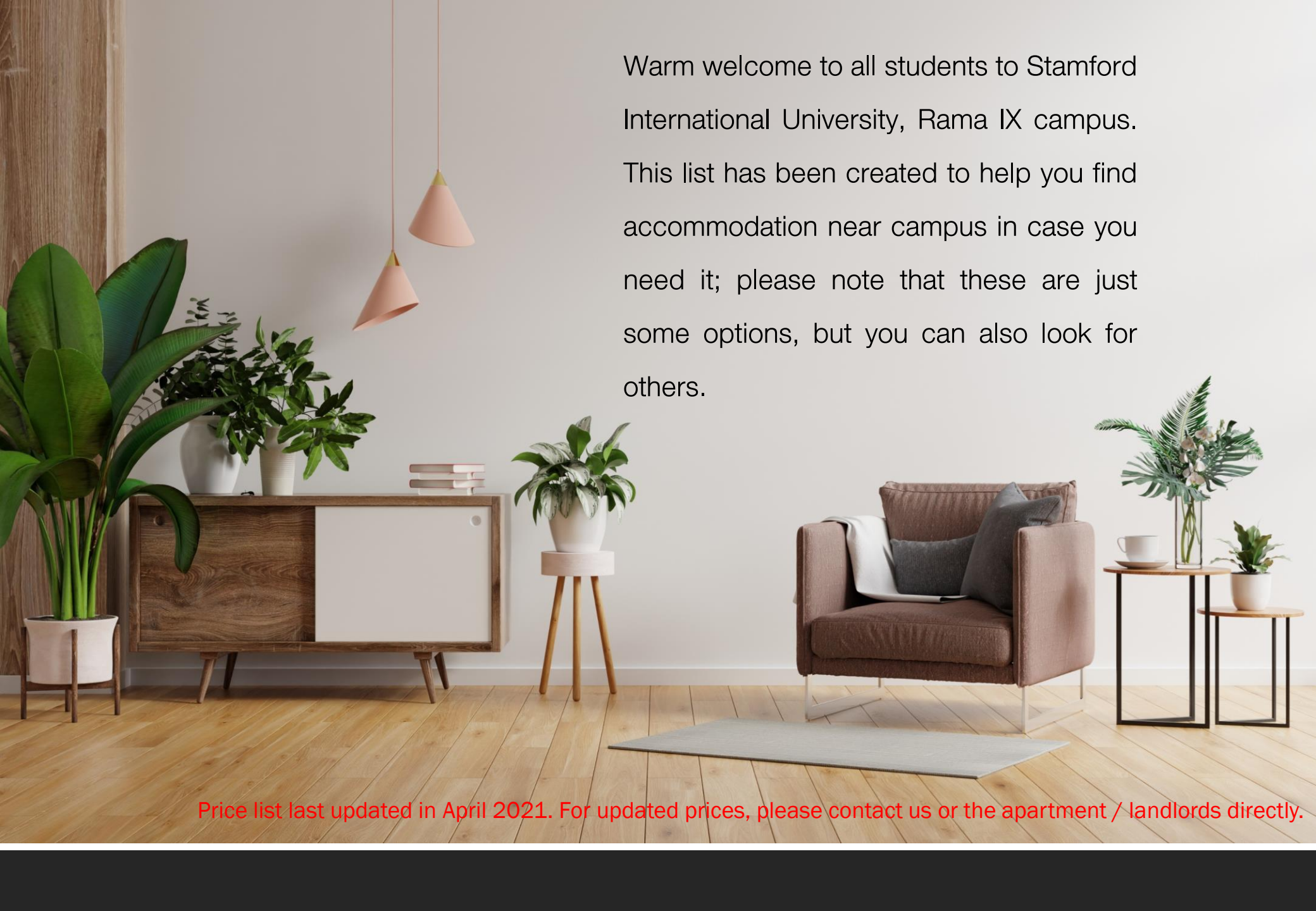




Accommodation List

Stamford International University

Rama 9 Campus



Warm welcome to all students to Stamford International University, Rama IX campus. This list has been created to help you find accommodation near campus in case you need it; please note that these are just some options, but you can also look for others.

Price list last updated in April 2021. For updated prices, please contact us or the apartment / landlords directly.

A decorative geometric pattern in the top right corner, featuring a large, light blue triangle with a white border, set against a dark blue background.

Accommodation Type

- Apartment
- Condominium
- Rented Townhome

A modern living room interior. A dark grey leather sofa with white pillows and a white blanket is positioned in front of a dark grey paneled wall. A large white framed sign with the word "Apartment" is mounted on the wall. To the left is a black floor lamp with a white shade. To the right is a white cylindrical side table with a gold rim, holding a vase with greenery. The floor is covered with a grey shag rug.

Apartment

Things you should know

1. The first payment must be done on your arrival day; currency: Thai Baht when paying in cash. Students have to prepare money in Thai Baht to pay for the payment.
2. The first payment includes the deposit (2 months), 1 month advance and key card or finger scan (200 baht per card or scan)

As an example, first payment, if the room is 4,800 baht per month, the first payment will be

The deposit (2 months)	$4,800 \times 2$	=	9,600 Baht
1 month advance		=	4,800 Baht
Key card or Finger scan		=	200 Baht
Total		=	14,600 Baht

Things you should know

3. The rental invoice, which includes water and electricity, will be sent to you at the end of the month. Please pay the room rent no later than the 5th of the next month. Late payment will be charged depending on each apartment's rules.
4. Standard rooms here are studio without kitchen or cooking facility. Every room has a bathroom inside and a balcony.
5. The apartment prices can not be discounted. Please do not bargain.
6. If you need help contacting this accommodation option, you can contact the Stamford Student Center at ponlayut.panchan@stamford.edu

Please review your lease agreement carefully as these conditions may vary.

The Park Ramkhamhaeng (Baan Suan)

Ramkhamhaeng 52/2 Hua Mark, Bangkapi, Bangkok 10240

Studio	30 sq.m.	4,800 - 5,900 THB
Studio	34 sq.m.	5,600 - 6,600 THB
Studio	38 sq.m.	6,500 - 7,500 THB

First payment & Length Contract

- Deposit 2 months + 1 month advance + Finger scan 200 THB
- Contract 3 months, 6 months, 1 year

Electricity 8.03 THB/unit Water 19.26 THB/unit

Provided furniture

- Bed, Bedding set, Wardrobe, Bedding Table, Water, Heater, Air Conditioner, Television, Refrigerator

Facilities

- Swimming pool, gym (free 6 times/month)
- Coin-operated laundry
- Internet WiFi (free)
- Cable TV
- Nearby Minimart

Map



Detail



Contact



ID : jit_smile

Tel. +6685-903-7867



MT Residence

11, Ramkhamhaeng 42, Hua Mak, Bang Kapi, Bangkok 10240

Studio	27 sq.m.	4,400 THB
Studio	37 sq.m.	5,200 THB
Studio	39 sq.m.	5,400 THB
1 bedroom	54 sq.m.	8,500 THB
2 bedrooms	82 sq.m.	12,500 THB

First payment & Length Contract

- Deposit 2 months + 1 month advance
- Contract Thai: 6 months / Foreigner: depends on visa period

Electricity 6 THB/unit

Water 100 THB/Person

Provided furniture

- Bed, Bedding set , Working desk, Wardrobe, Hot water, Air conditioner

Facilities

- Laundry machines
- Swimming pool (free)
- Fitness center (free)
- Internet WiFi
- Drinking water machine
- CCTV & Keycard system
- Minimart
- STUI shuttle van

Map



Contact



ID : meresidence



Tel. +662-736-3000 , +6688-138-1111



Mt Residence

AC Sport Village

61/1 Soi Ramkhamhaeng 50 , Hua Mark, Bangkapi, Bangkok 10240

King size 29 sq.m. 7,500 – 8,000 THB

First payment & Length Contract

- Deposit 12,000 THB + 1 month advance
- Contract 6 months

Electricity 5 THB/unit Water 17 THB/unit

Provided furniture

- Fully furnish, Refrigerator, Large balcony, Microwave, Washing sink, LED TV, Hot water

Facilities

- CCTV & Fingerprint system
- Cable TV (free)
- Drinking Water (free)
- Fitness (free)
- Swimming pool (free)
- Parking lot
- Internet WiFi (free)



Map



Detail



Contact



Tel. +6699-054-0011, +6684-900-0772

AC Sport Village



ID : ac.habitat , ac.habitatbkk

AC Habitat Bangkok

2 Soi Ramkhamhaeng 42 , Hua Mark, Bangkapi, Bangkok 10240

Twin bed	26 - 276 sq.m.	7,000 – 7,500 THB
King size	26 - 27 sq.m.	7,000 – 7,500 THB

First payment & Length Contract

- Deposit 12,000 THB + 1 month advance
- Contract 6 months

Electricity 5 THB/unit Water 17 THB/unit

Provided furniture

- Fully furnish, Refrigerator, Large balcony, Microwave, Washing sink, LED TV, Hot water

Facilities

- CCTV & Fingerprint system
- Cable TV (free)
- Drinking Water (free)
- Fitness (free)
- Meeting room
- Parking lot
- Internet WiFi (free)

Map



Contact



Tel. +6699-054-0011, +6684-900-0772



AC Habitat BKK



ID : ac.habitat , ac.habitatbkk

P Park Residence

597 Srinakarin Rd., Suan Luang, Bangkok 10250

Standard	22 sq.m.	5,500 THB
Standard	25 sq.m.	6,500 THB
Superior	25 sq.m.	6,500 THB

First payment & Length Contract

- Deposit 2 months (-500 THB) + 1 month advance
- Contract 1 - 12 months
- Key card 350 THB

Electricity 8 THB/unit Water 20 THB/unit

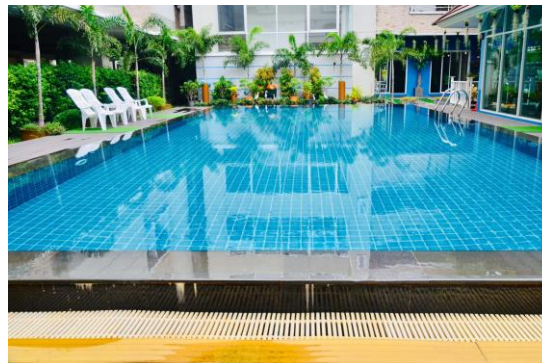
Provided furniture

- Bed, Wardrobe, Dressing Table, Water Heater, Air Conditioner, Television, Refrigerator
- Excluding dress sheet and pillow

Facilities

- Swimming pool & Gym
- Laundry machine
- CCTV & Fingerprint system
- Internet WiFi

Map



Contact



Tel. +662-320-1488



P-Park Residence



ID : @pparkrama9

ROOM24@Phathanakan

27/1, Phathanakan 54, Suan Luang, Bangkok 10250

Studio	12 sq.m.	4,500 THB
--------	----------	-----------

First payment & Length Contract

- Deposit 2 months + 1 month advance
- Contract 3 months
- Key card 350 THB

Electricity 8 THB/unit Water 20 THB/unit

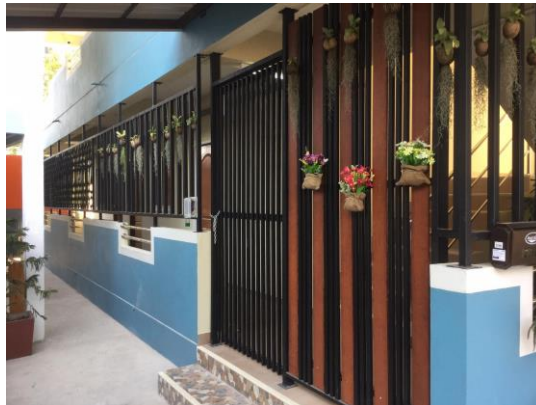
Provided furniture

- Bed, Wardrobe, Dressing Table, Air Conditioner, Television, Refrigerator
- Excluding dress sheet and pillow

Facilities

- Swimming pool & Gym (free for 12 months contract)
- Laundry machine
- CCTV & Fingerprint system
- Internet WiFi

Map



Contact



Tel. +6664-141-4125, +6698-837-3136



Room24



ID : 0641414125

WindandView Serviced Apartment

Phathanakan 53, Suan Luang, Bangkok 10250

Studio	20 sq.m.	6,500 THB
Studio	23-24 sq.m.	7,000 THB
Studio	27 sq.m.	9,000 THB
Studio	30 sq.m.	10,000 THB

First payment & Length Contract

- Deposit 2 months + 1 month advance
- Contract at least 12 months

Electricity 7 THB/unit

Water 18 THB/unit

Provided furniture

- Bed, Beside table, Smart TV , Working desk, Wardrobe, Hot water, Cable TV

Facilities

- Laundry machines
- Cooking area (free)
- Swimming pool (free)
- Fitness center (free)
- Internet WiFi (free)
- Learning space (free)
- CCTV & Keycard system
- Nearby Minimart
- Shuttle van

Map



Detail



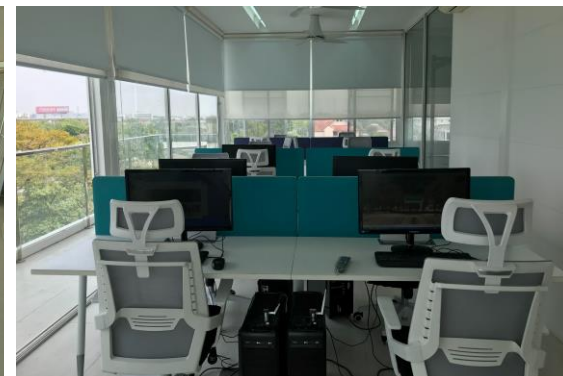
Contact



ID : 0841234453

Tel. +6664-098-2444

 Windandview



At Home Residence (@Home)

1/1 Soi 16, Seri 2 Road, Huamak, Bangkok, Bangkok 10250

Type(s) / Duration	1-3 months	4-6 months	12 months
Studio 28 sq.m.	9,000 THB	8,000 THB	6,000 THB
Studio 28 sq.m.	9,500 THB	8,500 THB	6,500 THB
Deluxe 35 sq.m.	14,000 THB	12,000 THB	10,000 THB
Junior Suite 50 sq.m.	16,000 THB	15,000 THB	14,000 THB

First payment & Length Contract

- Deposit 2 months + 1 month advance
- Contract 1-12 months

Electricity 6 THB/unit Water 15 THB/unit

Provided furniture

- Bed, Bedding set, Water Heater, Air Conditioner, Television, Cable TV, Refrigerator, Sofa, Balcony, Closet

Facilities

- Washing machine and dryer machine
- Finger Scan
- Drinking water machine
- High-speed internet (Wi-Fi Hotspot)
- Cleaning 500 THB/time
- Car parking 500 THB/month
- Motorcycle parking 100 THB/month

Map



Detail

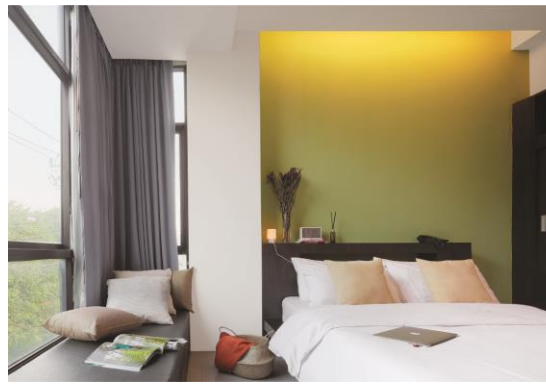


Contact



<https://athomebkk.com>

Tel. +6684 - 6786101, +66 2319 6100



Preena Srinakaran

9 soi Srinakaran 49, Srinakaran rd., Nongbon, Prawet, Bangkok 10250

Type A	64 sq.m.	16,500 THB
Type B	27 sq.m.	9,000 THB
Type E	50 sq.m.	14,500 THB
Type F	30 sq.m.	11,000 THB

First payment & Length Contract

- Deposit 2 months + 1 month advance
- Contract 3, 6, 12 months

Electricity / Water Price per unit defined by Electricity Authority

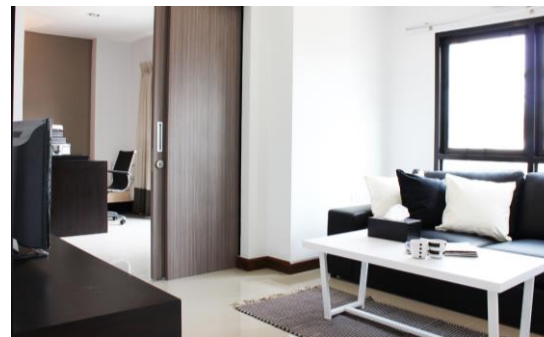
Provided furniture

- Bed, Refrigerator, TV, Dining set 4(A) 2(B), Washing sink, Wardrobe, Microwave, Hot water, Cable TV, Sofa (A)
- Excluding bed sheet and pillow

Facilities

- Brand-new furniture and electrical appliance
- Mini mart, laundry shop, and various stores
- Free WiFi and satellite
- Private Balcony
- Plenty parking space
- Fitness (free)

[Map](#)



[Detail](#)



[Contact](#)



<http://preena-srinakaran.com>

Tel. +6699-540-2613, +662-321-3315

My Home

18/1 Soi Supapong 1 Section 3-3, Nong Bon, Pravet, Bangkok 10250

View	28 sq.m.	6,000 - 6,500 THB
Standard	25/28 sq.m.	5,500 - 6,000 THB
Studio	32/42/45 sq.m.	6,500 - 7,000 THB
Corner	38/42/45 sq.m.	6,500 - 8,500 THB

First payment & Length Contract

- Deposit 10,000 THB + 1 month advance
- Contract 1-12 months

Electricity 5 THB/unit Water 17 THB/unit

Provided furniture

- Bed, Beside table, Working desk, Washing sink, Wardrobe, Hot water, Cable TV
- Excluding bed sheet and pillow

Facilities

- CCTV & Keycard system
- Laundry machine
- Nearby minimart
- Fitness (free)
- Parking lot
- Internet Wifi (Free)

[Map](#)



[Detail](#)



[Contact](#)



Tel. +6686-080-8105, +662-748-0722

My House Srinakarin Residence



ID : myhousemyhome

My House

18/1 Soi Supapong 1 Section 3-3, Nong Bon, Pravet, Bangkok 10250

Standard/View	25 sq.m.	5,500 THB
Studio	32 sq.m.	6,500 THB
Corner	38 sq.m.	6,500 – 8,500 THB
Suite	45 sq.m.	7,000 – 7,500 THB

First payment & Length Contract

- Deposit 10,000 THB + 1 month advance
- Contract 1-12 months

Electricity 5 THB/unit Water 17 THB/unit

Provided furniture

- Bed, Beside table, Working desk, Washing sink, Wardrobe, Hot water, Cable TV
- Excluding bed sheet and pillow

Facilities

- CCTV & Keycard system
- Laundry machine
- Nearby minimart
- Fitness (free)
- Parking lot
- Internet Wifi (Free)

[Map](#)



[Detail](#)



[Contact](#)



Tel. +6686-080-8105, +662-748-0722

My House Srinakarin Residence



ID : myhousemyhome

My Garden

18/1 Soi Supapong 1 Section 3-3, Nong Bon, Pravet, Bangkok 10250

Standard	26 sq.m.	6,000 THB
View	29 sq.m.	5,500 - 6,500 THB
Corner	42 sq.m.	6,500 - 8,500 THB
Suite	45 sq.m.	7,000 - 7,500 THB

First payment & Length Contract

- Deposit 10,000 THB + 1 month advance
- Contract 1-12 months

Electricity 5 THB/unit Water 17 THB/unit

Provided furniture

- Bed, Beside table, Working desk, Washing sink, Wardrobe, Hot water, Cable TV
- Excluding bed sheet and pillow

Facilities

- CCTV & Keycard system
- Laundry machine
- Nearby minimart
- Fitness (free)
- Parking lot
- Internet Wifi (Free)

[Map](#)



[Detail](#)



[Contact](#)



Tel. +6686-080-8105, +662-748-0722

My House Srinakarin Residence



ID : myhousemyhome

ROOM24@Hua-Mark

597 Srinakarin Rd. Suan Luang, Bangkok 10250

Studio 20 sq.m. 4,500 – 5,000 THB

First payment & Length Contract

- Deposit 2 months + 1 month advance
- Contract 6, 12 months
- Key card 350 THB

Electricity 8 THB/unit Water 20 THB/unit

Provided furniture

- Bed, Wardrobe, Dressing Table, Air Conditioner, Television, Refrigerator
- Excluding dress sheet and pillow

Facilities

- Swimming pool & Gym (free for 12 months contract)
- Shuttle van to STIU (free)
- Laundry machine
- CCTV & Fingerprint system
- Internet WiFi

Map



Contact



Tel. +6664-141-4125, +6698-837-3136



Room24



ID : 0641414125

Sookkasem Place

10 HuaMark Rd. Soi Hua Mark 12, Bangkapi, Bangkok 10240

Studio	27 sq.m	5,000 THB
Studio	38 sq.m	6,500 THB
Studio	43 sq.m	7,000 THB
Double room	54 sq.m	9,500 THB
Triple room	80 sq.m.	12,000 THB
Triple room	100 sq.m.	15,000 – 16,000 THB

First payment & Length Contract

- Deposit 2 months + 1 month advance
- Contract 3, 6, 12 months

Electricity 7 THB/unit Water 18 THB/unit

Provided furniture

- Bed, Wardrobe, Dressing Table, Air Conditioner
- Excluding bed sheet and pillow

Facilities

- Drinking Water machine
- Swimming pool (free)
- Laundry machine
- Internet WiFi (free)

[Map](#)



[Detail](#)



[Contact](#)



Tel. +6661-249-4695



ID : kirdsiri



Tres Casa Apartment

3, Soi Ramkhamhaeng 46, Hua Mark, Bangkapi, Bangkok 10240

Standard	32 sq.m.	8,500 THB
Standard (Conner)	38 sq.m.	9,500 THB

First payment & Length Contract

- Deposit 1 month + 1 month advance
- Contract 1 – 12 months

Electricity Price per unit defined by Electricity Authority

Water 18 THB/unit

Provided furniture

- Bed, Wardrobe, Dressing Table, Air Conditioner, TV, Refrigerator, Microwave
- Excluding bed sheet and pillow

Facilities

- Cable TV (free)
- Drinking water machine
- Laundry machine
- Internet WiFi (free)

Map



Detail

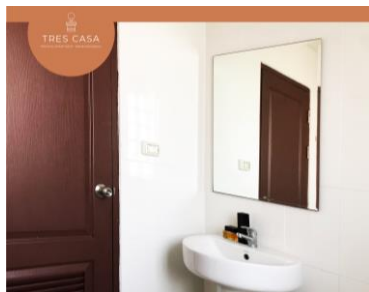
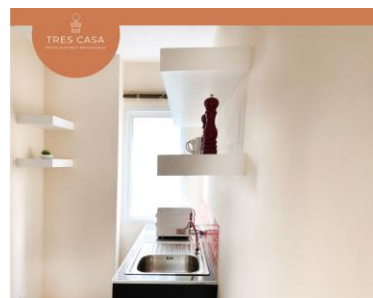


Contact



Tel. +6681-820-1939

Tres Casa Apartment



Kornkanok Place

4 Soi Srinakarindra 2 Srinakarindra Rd, HuaMark, Bangkapi, Bangkok 10240

Air condition	18 sq.m.	3,500 THB
---------------	----------	-----------

First payment & Length Contract

- Deposit 8,000 THB
- Contract 6 – 12 months

Electricity 8 THB/unit Water 18 THB/unit

Provided furniture

- Bed, Dressing Table, Air condition, Fan
- Excluding bed sheet and pillow

Facilities

- Coffee shop
- Drinking water machine
- Laundry machine
- Internet WiFi (free)



[Map](#)



[Detail](#)



[Contact](#)



Tel. +6681-403-3925

Kornkanok bnb



ID : kornkan9

Skyplace Srinakarin

522 Srinakarin 8 RD.Suanluang, Bangkok 10250

Standard Studio	34 sq.m	5,400-8,900 THB
Junior Suite	94 sq.m.	19,900-25,900 THB
Executive Suite I (2 bedrooms)	105 sq.m.	22,900 – 28,900 THB
Executive Suite II (3 bedrooms)	140 sq.m.	25,900-31,900 THB

First payment & Length Contract

- Deposit 2 months + 1 month advance
- Contract 1-12 months

Electricity 8 THB/unit Water 18 THB/unit

Provided furniture

- Bed, Refrigerator, TV, Dining set, Washing sink, Wardrobe, Microwave, Hot water, Cable TV, Sofa (A)

Facilities

- Swimming pool (free)
- Internet WiFi (free)
- Fitness (free)
- Security keycard and CCTV

Map



Detail



Contact



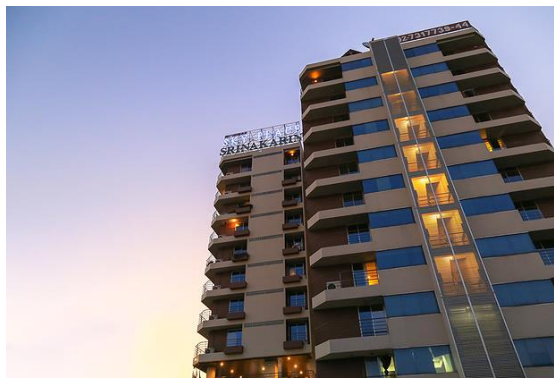
Tel. +662-731-7744, +6697-252-2061



ID: skyplace8



Skyplace Srinakarin



Zayn Express & Suite

597/1 Srinagarindra Rd, Suan Luang, Bangkok 10250

Superior Room	23 sq.m	12,000 THB
Deluxe Room	35 sq.m	15,000 THB
One Bedroom One Suite	64 sq.m.	25,000 THB

First payment & Length Contract

- Deposit 2 months + 1 month advance
- Contract at least 6 months

Electricity 8 THB/unit Water 20 THB/unit

Provided furniture

- Bedding, Balcony, Furniture, TV, Refrigerator, Air conditioner, Water heater, Hair dryer

Facilities

- Swimming pool
- Internet WiFi
- Fitness
- Security keycard and CCTV
- Washing machine
- Security guard
- Restaurant

Map



Detail



Contact



Tel. +662-322-2466



reservation@zaynexpress.com



ID: @zaynexpress



zaynexpress



Univ Place, Univ Residence

Pattanakarn Road Soi 37, Suan Luang, Bangkok 10250

Univ Place (only female student)	20 sq.m	6,000 – 6,500 THB
----------------------------------	---------	-------------------

Univ Residence	27 – 30 sq.m	7,5000 THB
----------------	--------------	------------

First payment & Length Contract

- Deposit 2 months
- Contract 12 months

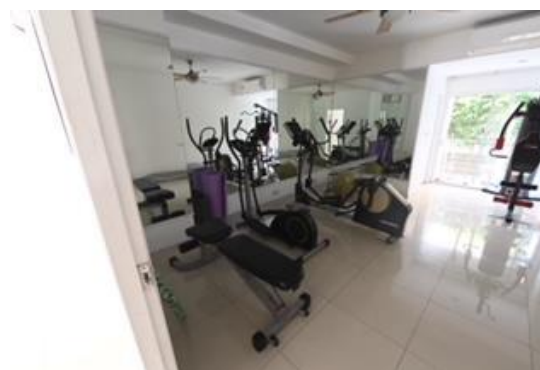
Electricity / Water unit price defined by Electricity Authority

Provided furniture

- Bed, Bedside Table, Working Desk, Wardrobe, Sink, Toilet, Hot Water, Air Conditioner
- Excluding bedsheets and pillows

Facilities

- Keycard & CCTV
- Female Only Building & Student Only Buildings
- Washing & Drying Machines
- 24 Hour Reception Desk / Security
- 7/11 On Site
- Internet & Wifi
- Common Room Areas & Kitchen
- Fitness Room



Contact



Tel. +662-722-8585 or +666-1549-1615

Condominium



Condominiums

A condominium, or condo, is the form of housing tenure and other real property where each room is individually owned with kitchen, bathroom and balcony.

- Normally the contract is 1 year
- Each room is different as it is owned by different landlord

Room Type	Room Size	Price (THB)
Studio	30 – 38 sq.m.	8,500 – 12,500
1 Bedroom	45 – 49 sq.m.	12,500 – 16,000
2 Bedrooms	56 – 60 sq.m.	18,500 – 30,000

If you want to rent a condo ...

- You may need to stay in a hotel or another accommodation for a few nights until the paperwork to rent the room is finalized, if you do not confirm it before you come.
 - If you need help contacting this accommodation option, you may refer to the contact information of each slide to contact each option by yourself; if you need any assistance contacting them, you may contact ponlayut.panchan@stamford.edu.
-

Rich Park@Triple Station

570 Srinakarin soi 17 Srinakarin Rd. Suan Luang Suan Luang,Bangkok 10250

Agent Contact Information



+6697-298-9594, +662-587-5559

+669-7949-5559



<https://bit.ly/3CiG1CP>

Detail

Map



Lumpini Place Srinakarin - Huamak Station

Pattanakan, Srinakarin, Suanluang

Agent Contact Information



+6697-298-9594, +662-587-5559

+669-7949-5559



<https://bit.ly/3wU3uJp>

Detail/Contact

Map



Lumpini Ville Ramkhamhaeng 44

Ramkhamhang Road, Hua Mak, Bang Kapi, Bangkok

Detail/Contact



Map



<https://bit.ly/3wSc9vP>



Lumpini ville ramkhamhaeng 26

Ramkhamhaeng, Hua Mak, ABAC, Bodindecha, Town In Town



[Detail/Contact](#)

[Map](#)



<https://bit.ly/3cddowp>



THE IRIS Rama9 - Srinakarin

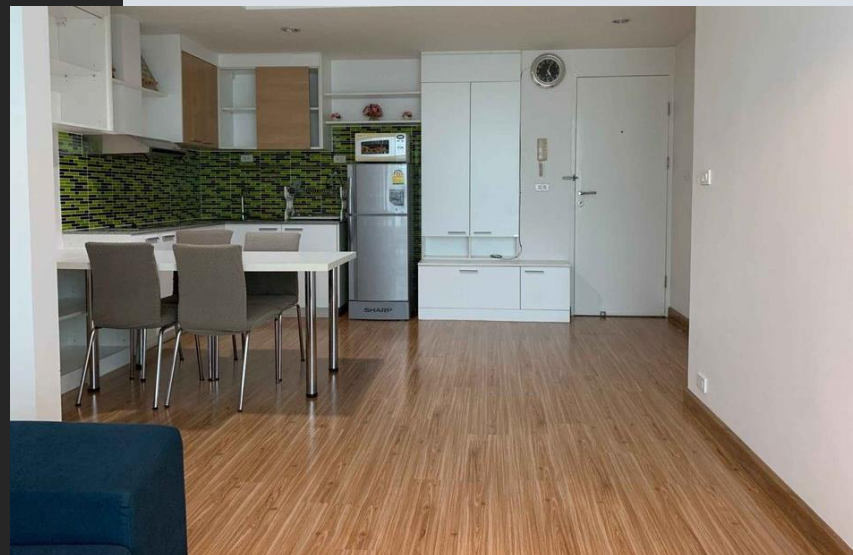
Pattanakan, Srinakarin, Suanluang

[Detail/Contact](#)

[Map](#)



<https://bit.ly/3DIsYSx>



Bliz Condominium Rama 9 - Hua Mak

Pattanakan, Srinakarin, Suanluang



[Detail/Contact](#)



[Map](#)



<https://bit.ly/3nk9lzl>



U Delight @ HuaMak Station

Ramkhamhaeng, Hua Mak, ABAC, Bodindecha, Town In Town



[Detail/Contact](#)



[Map](#)



<https://bit.ly/3kFRNRO>



Rented Townhome



Rented Townhome

- An option for a rented townhome is “The Metro Pattanakarn - Srinakarin” right next to Stamford Bangkok campus. It composed of 3 bedrooms, 4 toilets, 1 living room, and 1 kitchen with minimal of 1 year contract.
- Each townhome is different as it is owned by different landlord. Average price: 24,000 — 35,000 THB

If you want to rent a Townhome ...

- You may need to stay in a hotel or another accommodation for a few nights until the paperwork to rent the room is finalized
 - If you need help contacting this accommodation option, you may refer to the contact information of each slide to contact each option by yourself; if you need any assistance contacting them, you may contact ponlayut.panchan@stanford.edu.
-

The Metro Pattanakarn-Srinakarin

Prawet , Prawet , Bangkok

Contact : Khun Patchareeya

Tel. : +6686-445-9663

Email : livingrealestates@gmail.com

LINE ID : @livingcondo




[Detail](#)



[Map](#)





Please note that the information stated in this presentation is general information as per last day updated. We would recommend reviewing the details for each accommodation as per respective agreement carefully as conditions may vary.

Please note that the student service center at Rama 9 campus and Asoke Learning Center is here to assist you, in case you need it, to find accommodation upon arrival in Thailand; however, Stamford International University Center' student service center at Rama 9 campus and Asoke Learning Center does not offer accommodation and is not responsible for anything regarding accommodation regulation, accommodation agreement, immigration regulation, etc.



Accommodation List

Stamford International University

Rama 9 Campus